

## ▶ SPECIFICATIONS

ITEMS	PARAMETER	
Processing Volume	30 -1500μl, 30-1000ul	
Capacity	15,32,48 samples per run customized	
Collection efficiency of the magnetic particles	≥95%	
Heating Temperature (Not suitable for 48 samples per run)	For cell lysis	Room temperature to 120°C
	For nucleic acid elution	Room temperature to 120°C
Processing-mode	Multi-mode, multi-speed available	
Reagents	Reagents suitable for Magnetic Particle Method	
Operation Interface	Chinese/English-Language Operating System, Touch-control Operation	
Storage Capacity	15 preinstalled protocols in main unit, unlimited in pad	
Protocol Management	Create, edit, delete, protocol mode	
Pollution control	UV light	
Computer Interface	USB	
Network Communication	Ethernet(optional)	
Dimensions	440mm (W) ×435mm (L) ×445mm (H)	
Weight	31.5kg	
Power Requirements	AC110±10%/230V±10%, 50Hz/60H±1Hz, 600W	
Ambient Temperatures	10-40°C	
Relative Humidity	<80%	

**IANLONG®**  
Bring Technology to Life



Easy, flexible, and reliable  
new generation technology  
for rapid extraction

**Libex**  
**Nucleic Acid Extractor**



IANLONG® is a trademark of Xi'an Tianlong Science&Technology Co., Ltd

© 2014 Xi'an Tianlong Science&Technology Co., Ltd. All Rights reserved.

Information, descriptions, and specifications in this publication are subject to change without notice. Tianlong shall not be liable for errors contained herein or for incidental or consequential damages in connection with the furnishing, performance, or use of this material.

Made in China

NO.389 Zhuhong Road, Economic-Technological Development Area, Xi'an 710018, ShaanXi Province, P.R. China.

Tel: +86 29 82218051

Fax: +86 29 82216680

Email: medtl@medtl.com

www.medtl.com

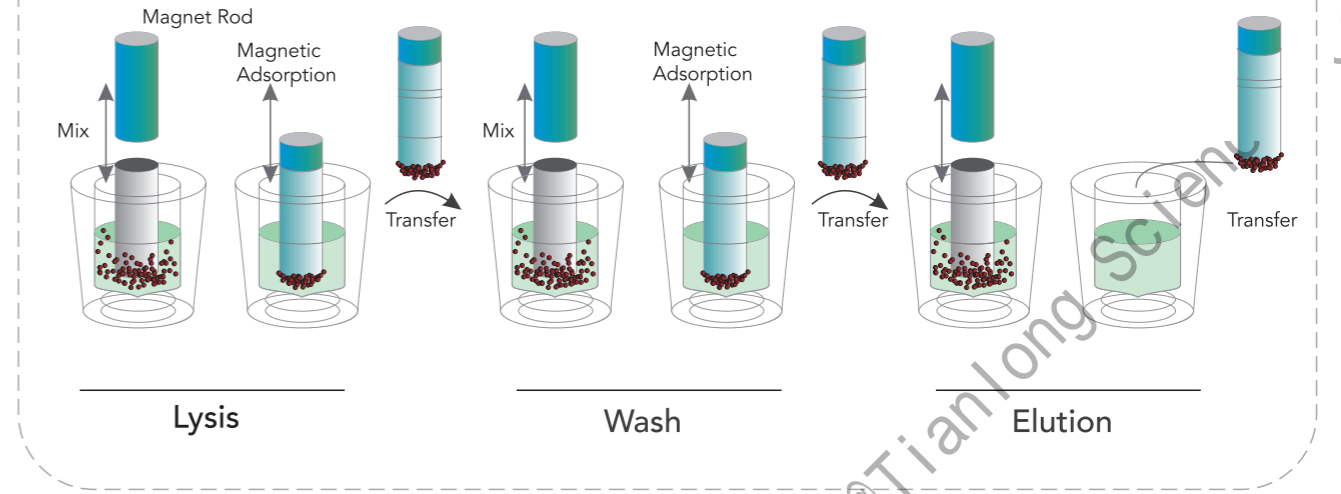


TianLong Nucleic Acid Extractor Libex utilizes the proven magnetic-particle technology to extract highly purified nucleic acid from a wide range of sample types relevant for molecular diagnostics, genetic identity testing, forensic testing, biomedical research, and gene expression analysis. The combination of easy-to-use instruments, with pre-loaded protocols selection and magnetic particle-based sample preparation kits filled with unique special reagent ensures the rapid nucleic acid extraction and highly purified products.

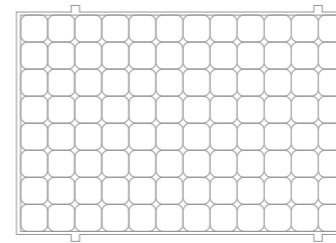
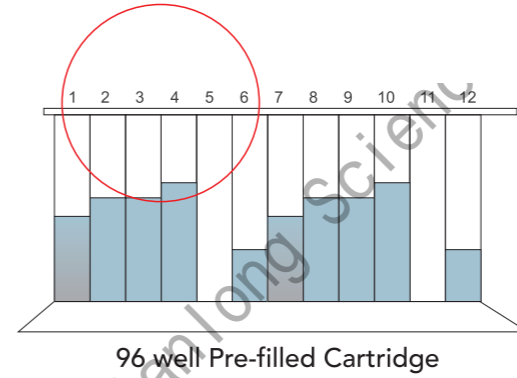
# Libex Nucleic Acid Extractor

Easy, flexible, and reliable new generation technology for rapid extraction

## PRINCIPLE

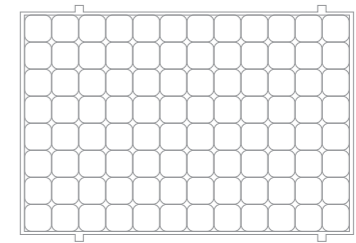
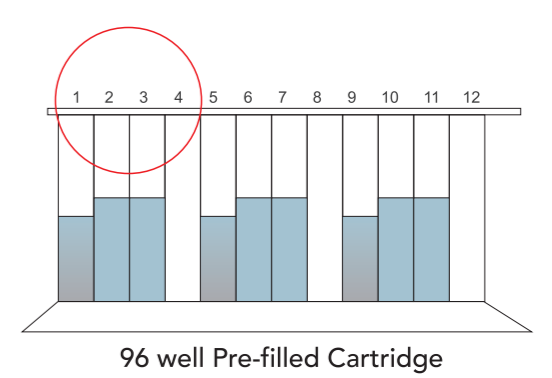


### STANDARD PROTOCOL

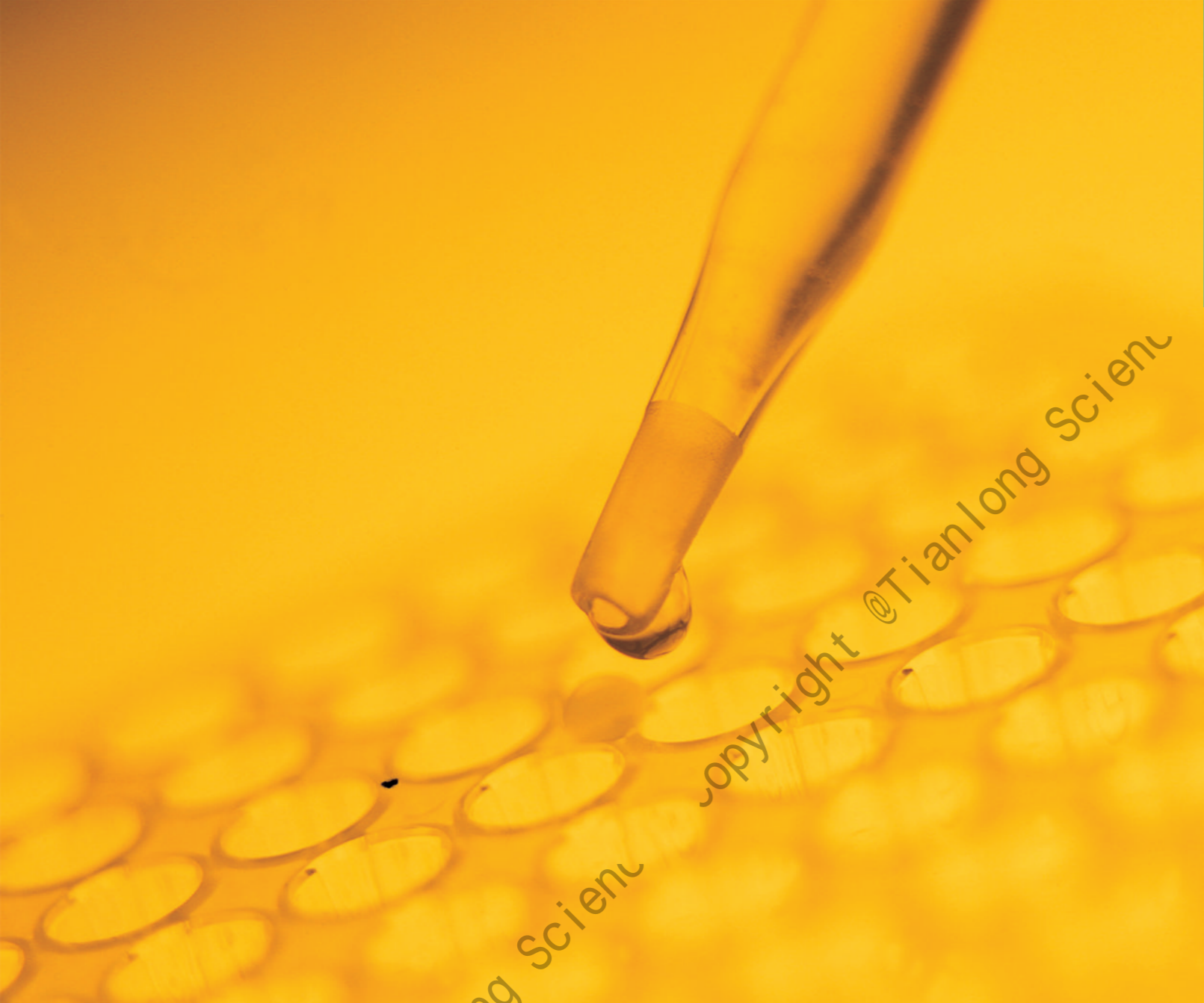


96 well for 16 samples

### RAPID PROTOCOL WITH SPECIAL REAGENTS



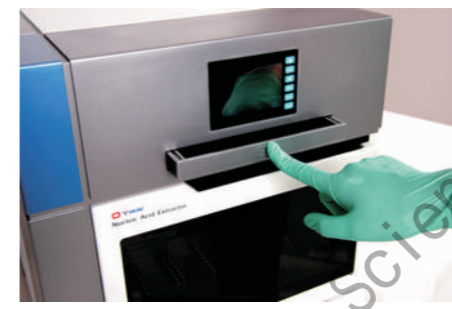
96 well for 24 samples



# EASY OPERATION

## UNIQUE REMOTE CONTROL

Libex is an open system that can be easily operated through a 3.5" screen keyboard combine with an unmatched remote control pad, no external computer is required. The pad connect the main unit via wifi, the "Extractor" app allows the operator to create, edit or delete the protocols, the protocols can also be easily shared between the main unit and pad, saving your stand-by time and improve your work efficiency.



A collapsible slot can be easily ejected for pad docking.



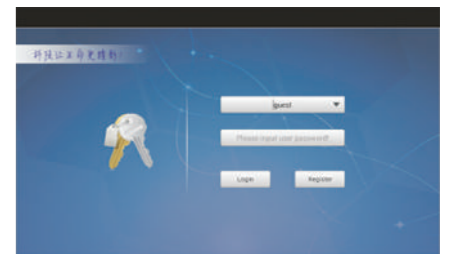
The hidden handle for easily moving.

## LIBEX EXTRACTOR AND PREPARATION KITS OFFERING YOU

- ▶ Easy Operation — Unique remote control pad saving time and improve your work efficiency
- ▶ Flexible solutions — Pre-loaded protocols selection for up to 15, 32 or 48 samples per run
- ▶ Fast startup and immediate results — With special rapid reagents, the extraction can be done within 10 minutes.
- ▶ Reliable result you can depend on — High-quality nucleic acids ready to use in sensitive downstream applications.

## SIMPLY REMARKABLE SOFTWARE

With the convenient software based on Android, a protocol can be set up and started with just a few clicks on the pad. Friendly and intuitive interface make it simple even for first time user.



# FLEXIBLE SOLUTIONS

## > COVERED FROM LOW TO HIGH THROUGHPUT

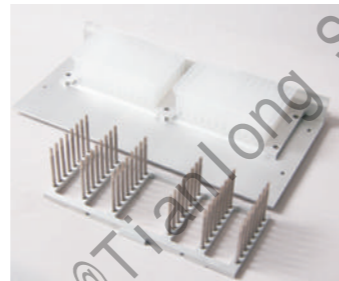
Uses the proven Tianlong extraction Kits, TianLong Nucleic Acid Extractor Libex offers a wide range throughput covered low to high requirements, Low throughput 15 samples per run, medium throughput 32 samples per run and high throughput 48 samples per run are optional for customers according to their requirements.



▲ 15 samples per run



▲ 32 samples per run



▲ 48 samples per run

## > MULTI-PROTOCOLS ARE OPTIONAL

15 pre-loaded optimizing protocols in the main unit are perfectly matched with Tianlong extraction Kits that can cover most of the extraction requirements.

# FAST STARTUP AND IMMEDIATE RESULTS

The proven magnetic particle-based sample preparation kits with special reagents ensure high-performance results of your extraction procedures. The unrivaled ease of use of Tianlong extraction Kits enables fast and reproducible extraction without the need for specialized training. The extensive application range delivers the flexibility that is essential for laboratories from a wide variety of sample types, like whole blood, tissue, FFEP etc.



With magnetic particle-based sample preparation kits, operators need only few steps to start the extraction instead of adding the sample and reagents one by one, save the work time and also reduce the operation errors.

Tianlong rapid extraction reagent kits including special reagents can reduce one wash step and accelerate the whole procedure in 10 minutes.

Temperature adjustable heat block can facilitate the process of lysis and elution to improve the efficiency, save your extraction time.



# RELIABLE RESULT YOU CAN DEPEND ON

TianLong Nucleic Acid Extractor Libex is designed to ensure great process safety, high performance, and user convenience.

- A message will popup on the screen in case cabin door opened during experiments to reduce potential contamination.
- The precise mechanic control system helps to reduce intra-contamination.
- The disposable consumables: 96 deep well plate and mixing sleeve facilitate to reduce inter-contamination.
- An intelligent-design UV lamp decontaminates the inner surface of the system as needed.

## > PERFORMANCE

Genomic DNA was isolated from 10 human whole blood samples with the Tianlong Libex and real-time PCR were run by Tianlong Real-time Quantitative PCR Detection System TL988.

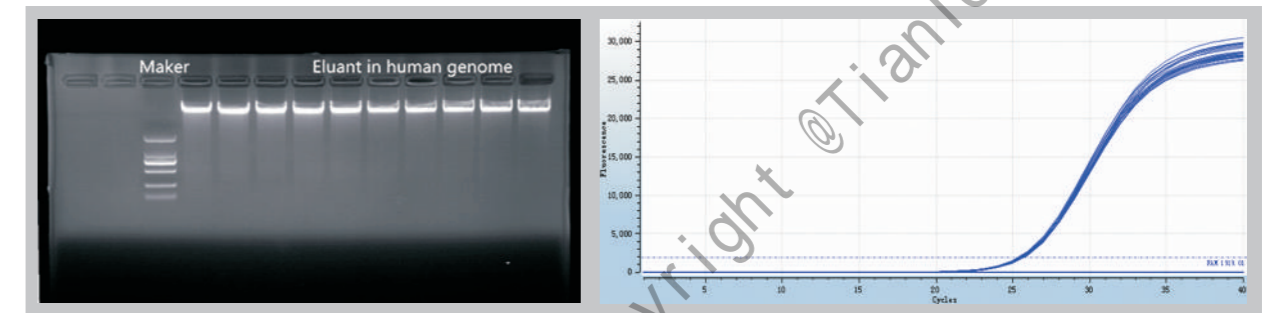


Figure1. Agarose gel electrophoresis

Sample	S1	S2	S3	S4	S5	S6	S7	S8	S9	S10
A260/A280	1.8	1.83	1.81	1.84	1.82	1.84	1.81	1.82	1.81	1.82
A260/A230	2.01	2.02	2.03	2.01	2.04	2.05	2.05	2.05	2.01	2.02
ng/μl	123.3	132.4	112.1	109.8	113.6	125.5	125.5	126.2	118.3	122.5

Figure2. Concentration and purity

Figure3. Real-time PCR was done using 5 ng of extract the product (homo sapiens Beta-actin ,ACTB) DNA in each of the 96 block positions. Low variation Cq values (Cq range = 0.12 and SD = 0.030) in each of the 96 positions demonstrated temperature homogeneity and equal treatment of all samples - independent of block position.

# SEAMLESS INTEGRATION INTO YOUR WORKFLOW

TianLong Nucleic Acid Extractor Libex can be seamlessly integrated into your workflow and is fully compatible with Tianlong assay technologies. The elution tubes of purified nucleic acids can be transferred to the Tianlong Real-time Quantitative PCR Detection System TL988 instrument for PCR setup. Analysis by real-time PCR can then be carried out for your future applications.

